

Operational Alert's inform Signal Mutual Members of serious incidents within the Mutual which resulted in permanent disability, death or a significant near miss. If you have similar operations, please share this Operational Alert with operation managers, supervisors, equipment operators, and all affected employees. It is imperative that management, at all levels review their operations for similar hazardous conditions, or acts and their controls.

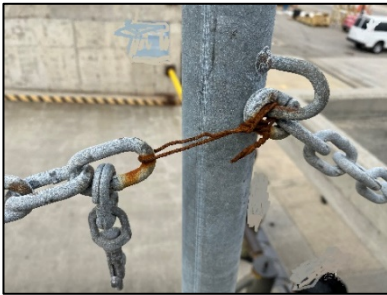
INCIDENT: Lasher Falls from Broken Safety Chain

SUMMARY

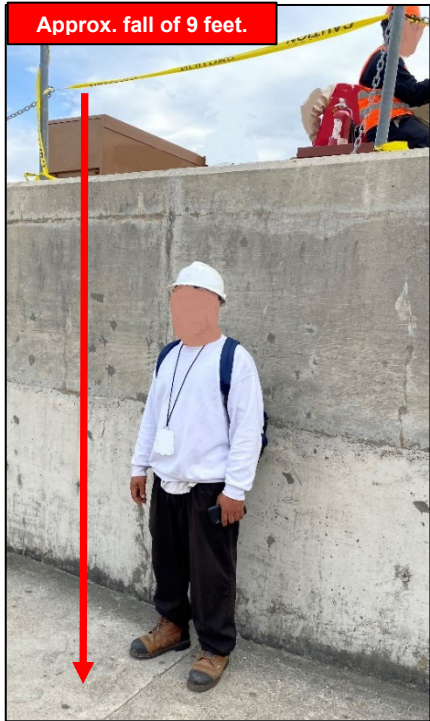
A mechanic finished for the day placed tools and equipment into gang box then sat on a safety chain of an elevated edge.

DESCRIPTION

While the mechanic and others were waiting for the rest of the crew to report back to the gang box, the mechanic decided to sit on the middle safety chain. The chain failed causing the Mechanic to fall backwards onto the surface below. He suffered a laceration to the face (33 stitches), fractured right hand (surgery), ankle fracture and suffered a C7 compression fracture. He was hospitalized for 1-week then to a 10-day recovery stepdown.



These are a few examples of makeshift, uninspected, no scheduled planned maintenance of stanchions and chains. If you have these condition in your operations, you must take action ASAP. It is a matter of time someone else will fall over the side into water or lower level.



CONSIDERATIONS

Stanchions and chains are intended to create a barrier between people and the edge to a lower level. They are not intended to be and should never be used for leaning or resting points. Review JHA's or Jobsite Reviews to include inspecting the area where employees gather before reporting to work area. This boosts a questioning attitude and enhances accuracy to situational awareness. Walk area where people gather and seek employee input, share concerns and follow up with actions taken.

Include in morning brief, employees must be on the lookout for **ARA'S - At Risk Acts**. The mechanic sitting on the chain is an ARA. Challenge ARA's. **Ask person taking risk to stop! Remind people they have loved ones waiting for them at home.** Self and Peer-Checking helps focus attention on current task or activity. When peers and supervisors see ARA's occurring with others watching, challenge them. **WHY** are you watching this happen and not saying something? You may discover you delivered a poor brief that did nothing to encourage your team to speak up and look after each other. Speaking up just might save someone.

Remember, the next person harmed could be you or someone's **Mother, Father, Daughter or Son.**

Whenever uncertainty, confusion, doubt exists, use: **S.T.A.R (Stop-Think-Act-Review)**

DISCLAIMER: The contents of this document are intended only for the informational use of the addressee. The information contained herein is not intended as, nor does it constitute, specific legal or technical advice to the reader. Any information or recommendations contained herein are provided to the addressee for usage at their own discretion. Neither Signal Mutual Indemnity Association Ltd., its Members, Managers or Signal Administration, Inc. and/or their employees accept liability whether in tort, negligence, contract, or otherwise, to anyone for any lack of technical skill, completeness of recommendations, or analysis of issues associated with the discussion of topics set forth herein. No responsibility is assumed for the discovery or elimination of unsafe conditions. Compliance with any recommendations herein should not assume your compliance with any federal, state, or local law or regulation. Additionally, the information contained herein does not constitute and shall not be construed to reflect the adoption of any coverage position by Signal Mutual Indemnity Association Ltd., its Members, Managers or Signal Administration, Inc. and/or their employees.